



## ANOGEN - A Division of YES Biotech Laboratories Ltd.

2355 Derry Road East, Unit 23, Mississauga, ON, Canada L5S 1V6 • Tel: (905) 677-9221 • Fax: (905) 677-0023

### Rabbit Anti-Mouse Kchip4 Polyclonal Antibody Datasheet

**Product Name:** pAb Rabbit anti-Mouse Kchip4

**Catalogue No.:** AI80008

**Quantity:** 0.1 mg/vial

<b>Description:</b>	Rabbit anti- Mouse potassium channel-interacting protein4 (Kchip4) polyclonal antibody
<b>Purification:</b>	Protein G affinity purified
<b>Product Type:</b>	Primary antibody
<b>Target Protein:</b>	Kchip4
<b>Immunogen:</b>	A synthetic peptide (KTSSPAIQNSV) derived from the amino sequence acid residue 45-57 of mouse Kchip4, conjugated with KLH for immunization.
<b>Specificity:</b>	This antibody is reactive to the 29kDa mouse Kchip4 in mouse brain tissue extract on Western blot.
<b>Species Reactivity:</b>	Mouse and other species with consensus Kchip4 sequence (KTSSPAIQNSV)
<b>Host</b>	Rabbit
<b>Formulation:</b>	Lyophilized in pH 7.4, 0.01M PBS.
<b>Reconstitution:</b>	Double distilled water is recommended to adjust the final concentration to 1.00mg/mL.
<b>Storage:</b>	Store at -20°C
<b>Research Area:</b>	Life science research, stem cell factor signalling, cancer research

**Background:** KChIP4 is a member of the potassium channel interacting protein family. It possesses calcium binding domains like other members of the KChIP family. KChIP4 is cloned accidentally with the yeast two- hybrid method using Presenilin as bait. The newly discovered protein does not affect the function of Presenilin, but instead, it will reconstitute the feature of A-type Kv channel after co-expression with Kv4.2, indicating that it is a potassium channel interacting protein.

**Applications:** **ELISA:** Dilute the antibody approx. 1:300,000 for detection of Kchip4 peptide (KTSSPAIQNSV) coated on ELISA plate.

**Western blot:** Dilute approx. 1:4,000 for using in Western blotting to detect the 29kDa Kchip4 in mouse brain extract.

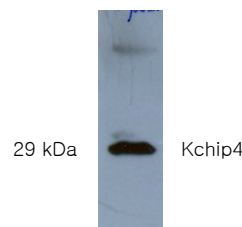


Fig.1 Western blot analysis of extracts from mouse brain using anti-kchip4 rabbit whole antiserum.

**References:** If research is published using this product, please inform Anogen in order to cite the reference on this datasheet. Anogen will provide one unit of product in the same category as gratitude.

This product is for **LABORATORY RESEARCH USE** and further manufacture **ONLY**, and cannot be administrated to human and animals for use in diagnostic and therapeutic procedures.

Manufactured by ANOGEN - A Division of YES Biotech Laboratories Ltd.