



ANOGENT - A Division of YES Biotech Laboratories Ltd.

2355 Derry Road East, Unit 23, Mississauga, ON, Canada L5S 1V6 • Tel: (905) 677-9221 • Fax: (905) 677-0023

Rabbit Anti-Human JAK2 Polyclonal Antibody Datasheet

Product Name: pAb Rabbit anti-Human JAK2

Catalogue No.: AI80013A

Quantity: 0.1 mg/vial

Description: Rabbit anti-Human Janus kinase 2 (JAK2), polyclonal antibody.

Purification: Protein G affinity purified.

Product Type: Primary antibody

Target Protein: Janus kinase 2 (JAK2)

Immunogen: A synthetic peptide derived from the human JAK2 peptide, conjugated with KLH for immunization

Specificity: This antibody reacts with the 130kDa JAK2 in TF-1 cell extract on Western blot.

Species Reactivity: Human and other species with consensus sequence

Host: Rabbit

Formulation: Lyophilized in pH 7.4, 0.01M PBS.

Reconstitution: Double distilled water is recommended to adjust the final concentration to 1.00mg/mL.

Storage: Store at -20°C

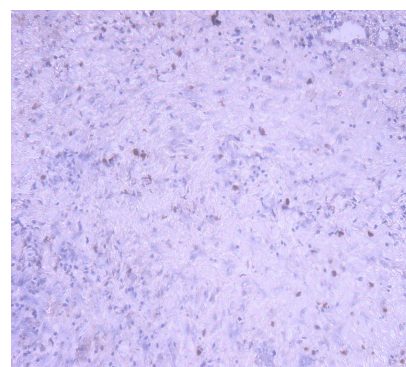
Research Area: Life science research, stem cell factor signalling, cancer research

Background: Janus kinase 2 (JAK2) is a non-receptor tyrosine kinase that plays an important role in signal transduction through its association with receptors on the cell membrane. When these receptors are activated by extracellular signals, the receptors activate JAK2 which in turn phosphorylates the tyrosine residues on

the receptors. The phosphorylation enables the binding of downstream signaling molecules, primarily, signal transducer and activator of transcription (STAT) proteins. STATs possess a SH-domain that specifically binds to phosphorylated tyrosine residue on the receptor. STAT in cytoplasm is activated after binding and migrates to nucleus to activate gene transcription. JAK2 mediates the transduction of a variety of extra-cellular signals in this pattern. The receptors that are associated with JAK2 include type II cytokine receptors, GM-CSF receptor family, gp130 receptor family, growth hormone receptor, prolactin receptor and EPO receptor.

Applications: **ELISA:** Dilute the antibody approx. 1:64,000 for detection of the JAK2 peptide coated on ELISA plate.

IHC: Figure below shows the IHC result with squamous cell lung carcinoma section using the antibody (Cat. No.: AI80013A).



This product is for **LABORATORY RESEARCH USE** and further manufacture **ONLY**, and cannot be administered to human and animals for use in diagnostic and therapeutic procedures.

Manufactured by ANOGENT - A Division of YES Biotech Laboratories Ltd.

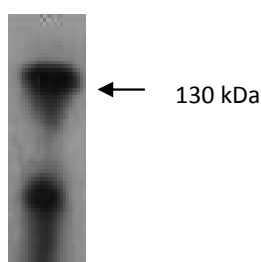


ANOGEN - A Division of YES Biotech Laboratories Ltd.

2355 Derry Road East, Unit 23, Mississauga, ON, Canada L5S 1V6 • Tel: (905) 677-9221 • Fax: (905) 677-0023

The tissue section was treated by heat induced epitope retrieval before primary antibody was added. The secondary antibody was an HRP conjugated goat anti-rabbit IgG antibody.

Western blot: Dilute the polyclonal antibody approx. 1:2,000 for use in Western blot to detect 130kDa JAK2 in TF-1 cell extract.



References:

If research is published using this product, please inform Anogen in order to cite the reference on this datasheet. Anogen will provide one unit of product in the same category as gratitude.

This product is for LABORATORY RESEARCH USE and further manufacture ONLY, and cannot be administered to human and animals for use in diagnostic and therapeutic procedures.

Manufactured by ANOGEN - A Division of YES Biotech Laboratories Ltd.