



ANOGEN - A Division of YES Biotech Laboratories Ltd.

2355 Derry Road East, Unit 23, Mississauga, ON, Canada L5S 1V6 • Tel: (905) 677-9221 • Fax: (905) 677-0023

Mouse Anti-Human FPRL1 C-terminal Monoclonal Antibody Datasheet

Product Name: mAb anti-Human FPRL1 C-terminal

Clone No.: B4D9B10

Catalogue No.: MO-P40006B

Quantity: 0.5 mg/vial

Description: Mouse monoclonal antibody against C-terminal amino acid sequence on human formyl peptide receptor-like 1 (FPRL1)

Product Type: Purified primary antibodies

Target Protein: Human formyl peptide receptor-like 1

Immunogen: A short peptide corresponding to the C-terminal amino acid sequence (SASPPAETELQAM) on FPRL1 was conjugated with KLH for immunization.

Fusion Myeloma: Sp2/0-Ag14

Specificity: This monoclonal antibody reacts with the above mentioned peptide in ELISA and reacts with the 38KD FPRL1 on Western Blot.

Species Reactivity: Human, others not tested.

Cross-Reactivity: Not identified

Host / Isotype: Mouse, IgG1 Kappa

Formulation: Lyophilized from a solution in 0.01M PBS, pH 7.2

Reconstitution: Double distilled water is recommended to adjust the final concentration to 1.00mg/mL.

Storage: Store at -20°C

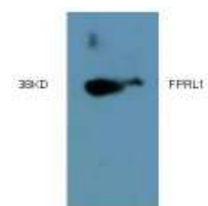
Research Area: G-protein coupled membrane receptor, chemotaxis and Alzheimer's disease.

Background: Human formyl peptide receptor-like 1 (FPRL1) is a G-protein coupled seven transmembrane receptor. The receptor

can bind to the formyl peptides derived from the degradation of the cell wall of infected bacteria and host cells. FPRL1 expressed on the cell surface of neutrophils and other leukocytes mediates the chemotaxis of these cells toward infected site. It has been reported that acute phase protein SAA is also a ligand of FPRL1 and SAA can induce the secretion of IL-8 and TNF- α by neutrophil through FPRL1 signalling. FPRL1 has also been shown to mediate the chemotaxis of microglia by Abeta42 peptide and the internalization of Abeta42 peptide into cytoplasm of macrophage, indicating that FPRL1 may participate in the Abeta42 peptide elicited pathogenesis in Alzheimer's disease.

Applications: **ELISA:** Reactive to the C-terminal amino acid sequence (SASPPAETELQAM) on FPRL1 in indirect ELISA.

Western Blot:



Western blot analysis of HL60 cell extract using anti-FPRL1 antibody clone D4D9B10 at 1µg/mL.

References: If research is published using this product, please inform Anogen in order to cite the reference on this datasheet. Anogen will provide one unit of product in the same category as gratitude.

This product is for LABORATORY RESEARCH USE and further manufacture ONLY, and cannot be administered to human and animals for use in diagnostic and therapeutic procedures.

Manufactured by ANOGEN - A Division of YES Biotech Laboratories Ltd.